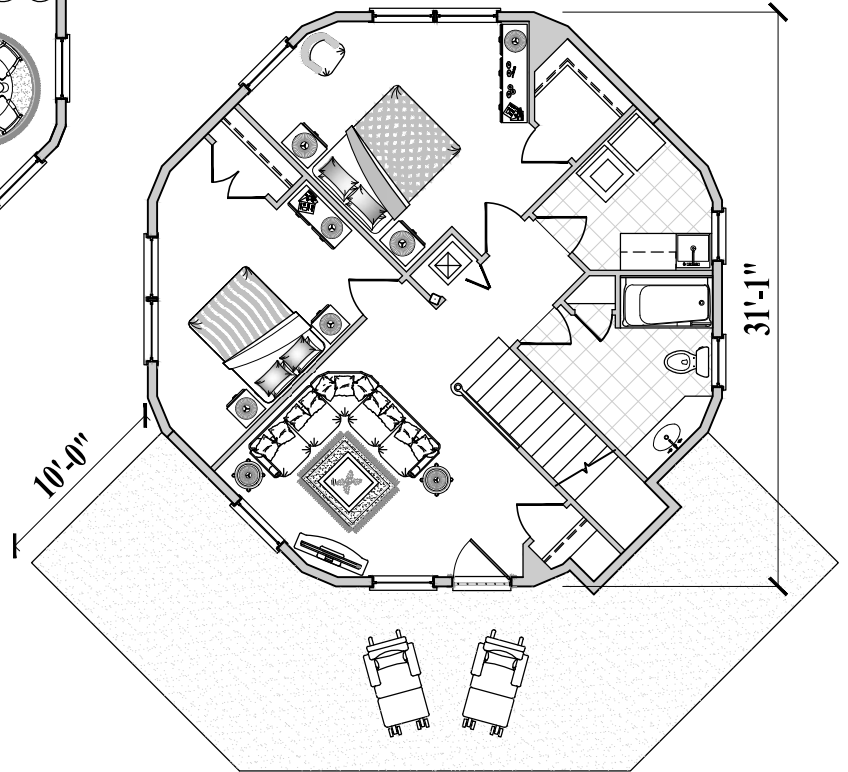


Upper Floor Plan  
(1,000 sq. ft. or 92.9 m<sup>2</sup>)

3 Bedrooms / 2 Baths / Living  
Dining / Kitchen / Family / Utility  
(Total 1,810 sq. ft. or 168.2 m<sup>2</sup>)



Lower Floor Plan  
(810 sq. ft. or 75.3 m<sup>2</sup>)

