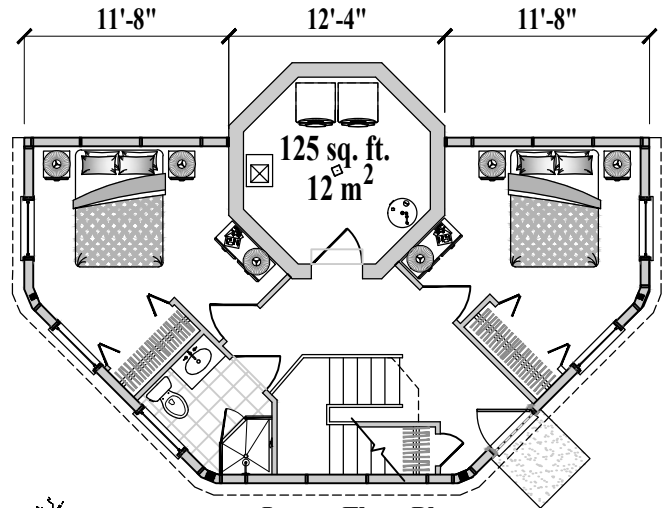


Floor Plan  
( Total 1,135 sq. ft. or 105 m<sup>2</sup> )

3 Bedrooms / 2 Baths  
Living / Dining / Kitchen  
Foyer / Utility  
( Total 1,770 sq. ft. or 165 m<sup>2</sup> )



Lower Floor Plan  
( Total 635 sq. ft. or 60<sup>2</sup> m<sup>2</sup> including Pedestal )

