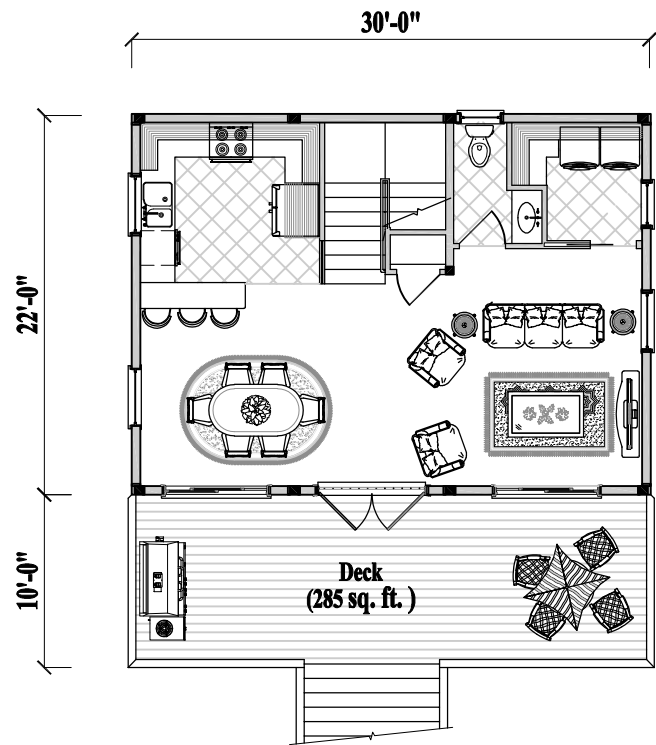
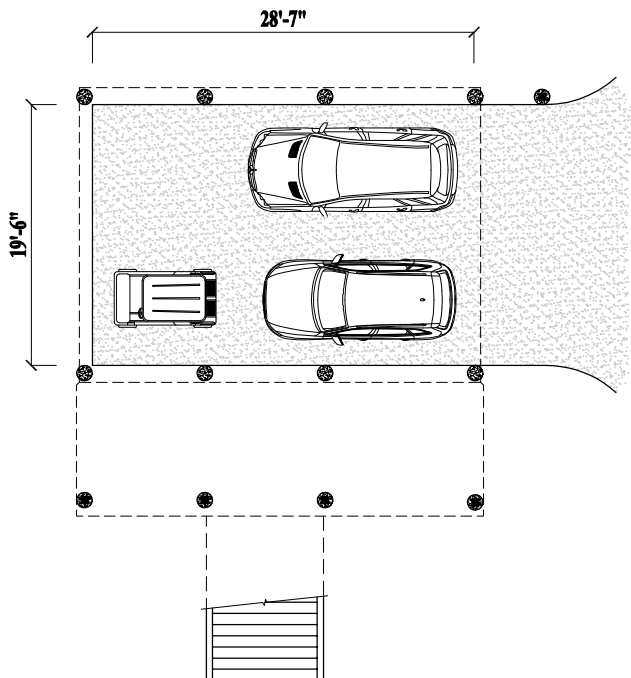


**Upper Floor Plan**  
(665 sq. ft. or 61.8 m<sup>2</sup>)



**Lower Floor Plan**  
(665 sq. ft. or 61.8 m<sup>2</sup>)

**3 Bedrooms / 2 1/2 Baths**  
**Living / Dining / Kitchen**  
**Laundry / Covered Porch**  
**(Total 1,330 sq. ft. or 123.6 m<sup>2</sup>)**



**Ground Level**

