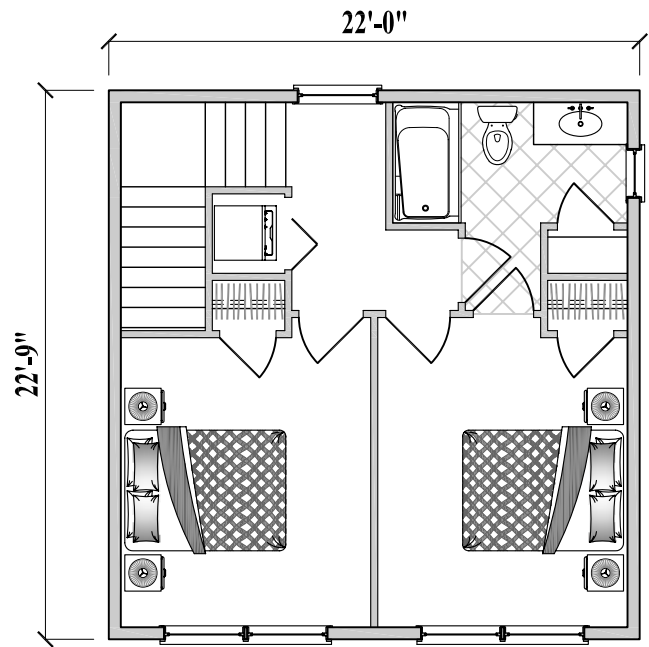


**Lower Floor Plan**  
(400 sq. ft. or 37.2 m<sup>2</sup>)



**Upper Floor Plan**  
(500 sq. ft. or 46.4 m<sup>2</sup>)

**2 Bedrooms / 1 1/2 Baths**  
**Living / Dining / Kitchen / Laundry**  
**(Total 900 sq. ft. or 83.6m<sup>2</sup>)**

