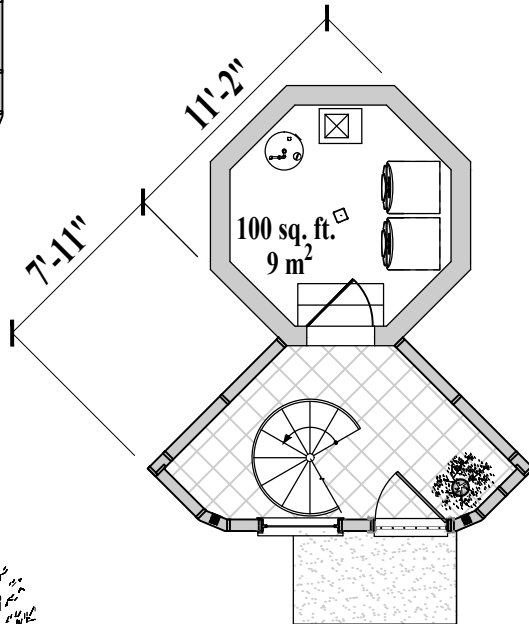


**Floor Plan**  
(Total 600 sq. ft. or 56m<sup>2</sup>)

1 Bedroom / 1 Bath  
Living / Dining / Kitchen  
Foyer/Utility  
(Total 800 sq. ft. or 74 m<sup>2</sup>)



**Lower Floor Plan**  
(Total 200 sq. ft. or 18 m<sup>2</sup>  
including Pedestal)

