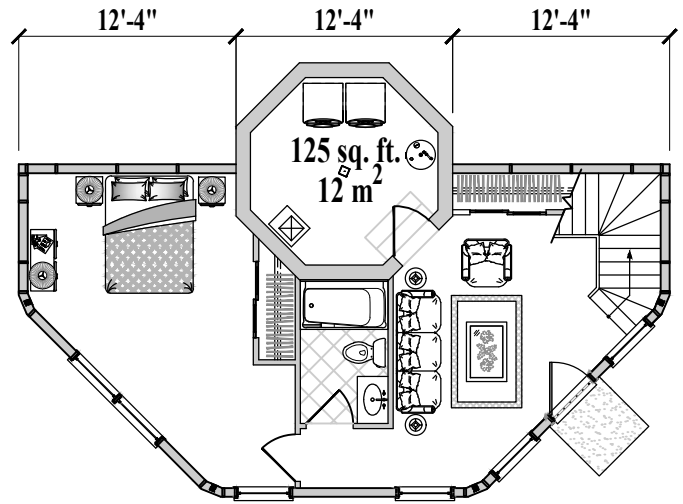


Floor Plan  
( Total 1,135 sq. ft. or 105 m<sup>2</sup> )

3 Bedrooms / 3 Baths  
Living / Dining / Kitchen  
Family Room / Utility  
( Total 1,785 sq. ft. or 165 m<sup>2</sup> )



Lower Floor Plan  
( Total 650 sq. ft. or 60 m<sup>2</sup>  
including Pedestal )

